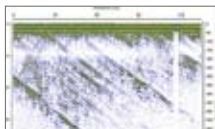




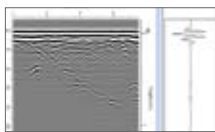
1. File management



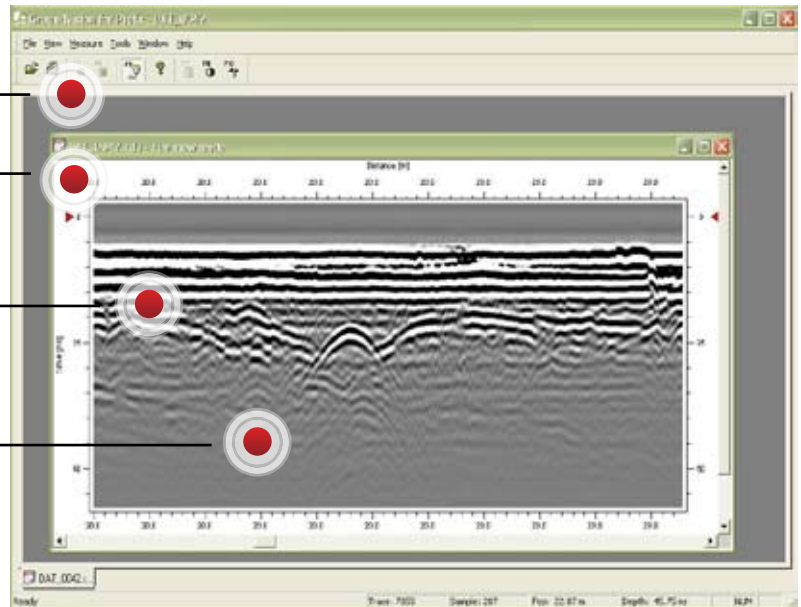
2. Printing Options



3. Easy-to-use Interface



4. Filter Options



## MALÅ GroundVision™

MALÅ GroundVision™ software is a data acquisition software designed by MALÅ Geoscience dedicated to MALÅ GPR Systems in single or multi-channel mode. The software is available as MALÅ GroundVision and MALÅ GroundVision 2.

MALÅ GroundVision is the first version designed for the MALÅ RAMAC/GPR parallelport communication units; MALÅ CUII and MALÅ X3M and offers an easy-to-use interface, file management, printing and other key features such as GPS compatibility.

GroundVision 2 is the latest version optimized and designed for the new MALÅ GEoscience platform of units; MALÅ ProEx (Professional Explorer Unit) and MALÅ X3M both with Ethernet communication.

Each measurement and its associated settings are stored in files. MALÅ GroundVision and MALÅ GroundVision 2 provide the option of filtering the data during data acquisition and also afterwards during post-processing. The software supports both GPS logging and multiple markers during measurement. All radargrams can be printed as such, or post processed by further software.

### Head Office

MALÅ Geoscience AB  
Skolgatan 11, SE-930 70  
Malå, Sweden  
Phone: +46 953 345 50  
Fax: +46 953 345 67  
E-mail: sales@malags.com

### Offices

USA: MALÅ Geoscience USA, Inc., 2040 Savage Rd. Box 80430, Charleston, SC 29416  
Phone: +1 843 852 5021, Fax: +1 843 769 7392, E-mail: sales.usa@malags.com

China: MALÅ Geoscience (China), Room 2604, Yuan Chen Xin BLDG, No.12 Yu Min Road Chao Yang District, Beijing 100029  
Phone: +86 10 8225 0728, Fax: +86 10 8225 0815, E-mail: sales@malags.com